



CRUX Mud-Exclusion Diaphragms

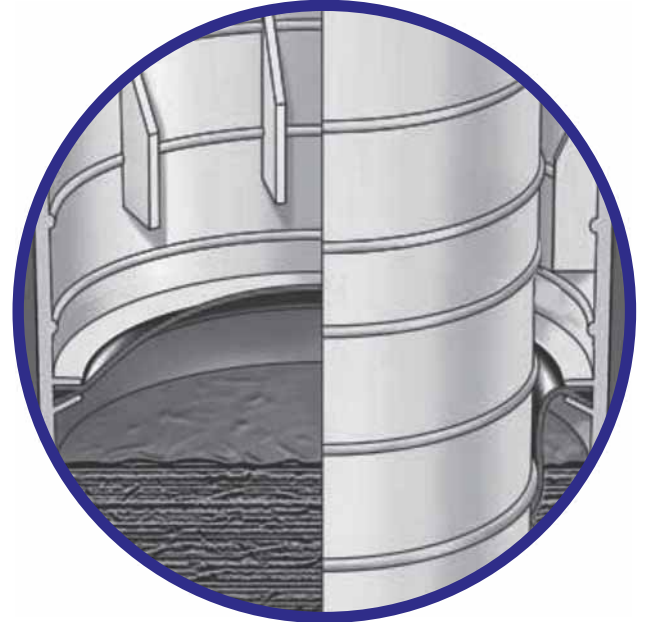
CRUX Mud-Exclusion Diaphragms are used to prevent seabed material from entering the annulus between the pile and pile sleeve or structure leg prior to pile insertion.

This type of Diaphragm is used in conjunction with Grout Seals where there are soft seabed conditions, such as encountered in the Gulf of Mexico. The combined action of the Mud- Exclusion Diaphragm and Grout Seal ensures that no seabed material ever enters the annulus.

These relatively lightweight Diaphragms are provided with a keeper plate fixing similar to that used for Grout Seals. Similar keeper plate geometry to that used for Grout Seals of similar size is maintained, thus providing consistent Can configuration.

This type of Diaphragm is manufactured without any tooling requirement and at consequent low cost. This and the avoidance of flange machining, as required for other types of Diaphragm, leads to major cost savings.

Mud-Exclusion Diaphragms have been used with complete success on many structures with pile sizes up to the largest in present day use.



CRUX PRODUCTS LIMITED

Suite 13B Enterprise House
Enterprise Way
Edenbridge
Kent TN8 6HF
UNITED KINGDOM

+44(0) 1342 832071
info@cruxproducts.co.uk
www.cruxproducts.co.uk